

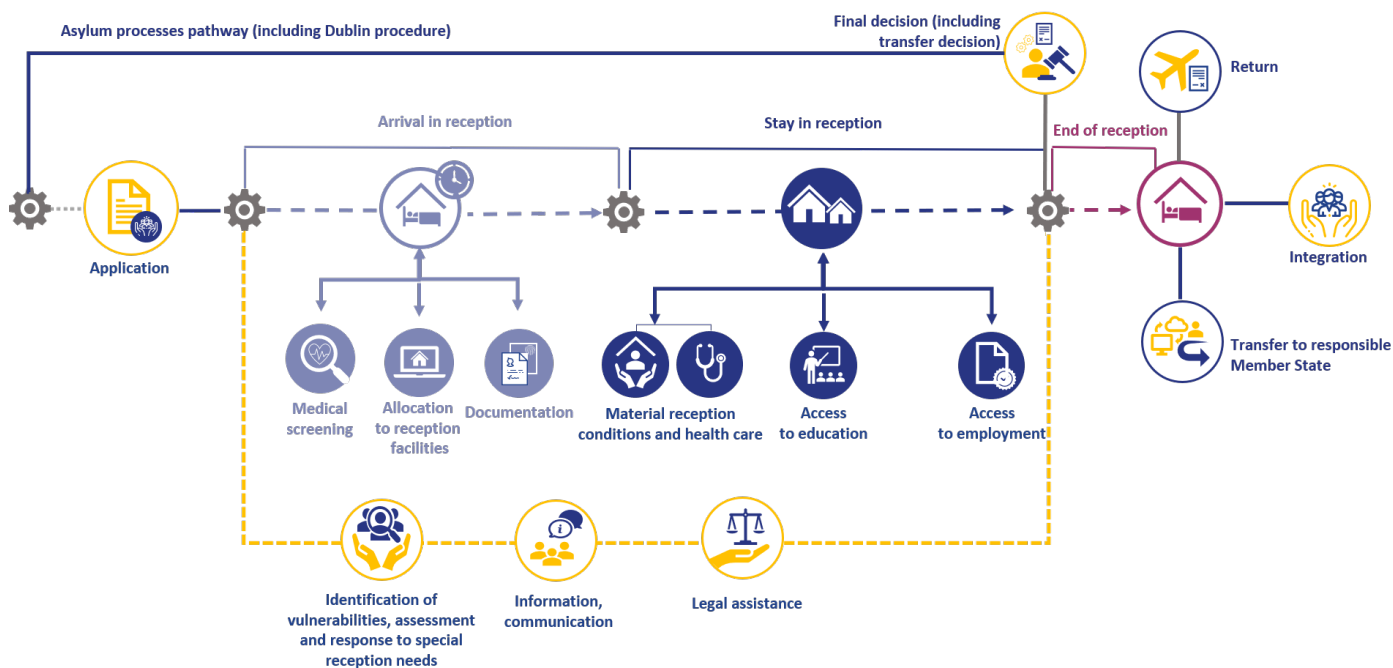


Please cite as: EUAA, '4.7.1 Organisation and functioning of reception systems' in *EASO Asylum Report 2021*, Ιανουάριος 2022.

## 4.7.1 Organisation and functioning of reception systems



### Reception pathway



*Disclaimer: The reception process and entitlements are intrinsically linked to the asylum procedure and pathway. The depicted three phases of reception are a simplified representation, showcasing the rights and obligations of applicants for international protection according to the EU asylum acquis. It does not necessarily cover all existing systems in EU+ countries.*



© European Union Agency for Asylum 2026 | Email: [info@euaa.europa.eu](mailto:info@euaa.europa.eu)